

A photograph of a woman with her hair in a bun, wearing a red, white, and blue plaid shirt, holding a young child. Both are smiling and laughing joyfully. The background is a soft-focus green outdoor setting with sunlight filtering through the trees.

**Health Insurance  
for Now and  
Whatever Is Next**

**Welcome Kit**

  
**AmeriHealth Caritas™**  
**Next**

A product of AmeriHealth Caritas Florida, Inc.

## What's Next?

Welcome to AmeriHealth Caritas Next! Health insurance to help you stay healthy today, tomorrow, and for whatever is next.

### Your Welcome Kit

This booklet has important information about your AmeriHealth Caritas Next benefits.

### Your member ID card

Your member ID card is included inside this Welcome Kit.

- ♥ Please check the information on your card to make sure it is right.
- ♥ To make changes, call Member Services at **1-833-999-3567 (TTY 711)**.



Tips for using the AmeriHealth Caritas Next member ID card:

- ♥ Carry your card at all times.
- ♥ If you lose your card, call Member Services at the number above.
- ♥ To learn more, go to **[www.amerihealthcaritasnext.com/fl](http://www.amerihealthcaritasnext.com/fl)**.

	A product of AmeriHealth Caritas Florida, Inc. A Health Maintenance Organization Group number: <b>NGG0010</b>
Subscriber name <b>John L. Doe</b> AmeriHealth Caritas Next ID <b>123456789</b>	Effective date <b>MM/DD/YYYY</b> Pharmacy RxBIN # <b>019595</b> Pharmacy RxCPCN # <b>PRX02813</b>
Member name <b>Jame L. Doe</b> Member ID number <b>123456789-01</b>	Deductible in network (Med & Rx): <b>SX IND/SX FAM</b> Coinsurance (Med & Rx): (%) Out-of-pocket in network: <b>SX IND/SX FAM</b>
Player ID: <b>45408</b>	Copays: PCPN: <b>SXX</b> SPEC: <b>SXX</b> UC: <b>SXX</b>
Limits and deductibles may apply to some services. <span style="float: right;">Not transferable.</span>	

	<b><a href="http://www.amerihealthcaritasnext.com/fl">www.amerihealthcaritasnext.com/fl</a></b> A product of AmeriHealth Caritas Florida, Inc.
<b>Next</b>	Member Services <b>1-833-999-3567 (toll-free)</b> <b>TTY 711</b>
<b>Notice:</b> Always carry your AmeriHealth Caritas Next card. You'll need it to get your benefits. Go to your AmeriHealth Caritas Next primary care provider (PCP) for medical care. <b>Emergency note:</b> Go to an emergency room near you if you believe your medical condition may be an emergency. If you get emergency care, please notify your PCP.	Provider Services <b>1-833-983-9377</b> Report fraud <b>1-866-833-9718</b> Prior Authorization/Notification of Hospital Admissions: <b>1-833-983-3577</b>
<b>Out-of-area care:</b> Report out-of-area care to AmeriHealth Caritas Next and your PCP within 48 hours. All claims are subject to review. If your provider is out-of-network, members are responsible for ensuring that prior authorization is obtained. Participating Florida providers are responsible for obtaining prior authorization. Insured by AmeriHealth Caritas Florida, Inc. Find network providers and pharmacies and covered drugs at <b><a href="http://www.amerihealthcaritasnext.com/fl">www.amerihealthcaritasnext.com/fl</a></b>	Pharmacy Member Services: <b>1-833-981-7967 or TTY 711</b> Pharmacy Provider Services <b>1-833-982-7977</b>
For provider claims processing, mail to: AmeriHealth Caritas Next Provider Claims Processing P.O. Box 1744 London, KY 40342-7344	



## Your primary care provider (PCP)

When you join AmeriHealth Caritas Next, you will need to choose a primary care provider (PCP). This is a very important step.

Your PCP is a doctor, nurse practitioner, physician assistant, or other medical provider who is focused on your health and wellness. You should plan to see your PCP on a regular basis so they can provide you with the best care. They will also be your first call when you have a medical problem or concern. They can refer you to specialists if you need care your PCP doesn't provide.

When choosing a PCP, be sure to find one whom you can get to easily and who can accommodate your personal needs, including your communication needs. If you are unable to choose, we can assign one to you. Remember, you can change your PCP at any time for any reason on the Member Portal.

## Your Member Portal

### What is the Member Portal?

The Member Portal is an easy-to-use, secure website that has most of your recent health history. Use it to take charge of your health.

### How do I find the Member Portal?

- ♥ Visit [www.amerihealthcaritasnext.com/fl](http://www.amerihealthcaritasnext.com/fl) and go to the member page.
- ♥ Click Member Portal from the menu.
- ♥ If you are a first-time user, sign up with your member ID number (on your ID card).
- ♥ Choose a user ID and password.
- ♥ If you have already signed up, just log in.

### Manage your health.

Not everyone likes to talk on the phone. That's why we've made some options available online. The Member Portal is available 24 hours a day, seven days a week for you to access your health records.

### Other benefits of the Member Portal

- ♥ Get your claims and/or billing history.
- ♥ Get benefit details.
- ♥ Get up to six months of your prescription history, find in-network pharmacies, and more.
- ♥ Learn about your health with a variety of articles.



### Download our mobile app.

Manage your health care, wherever you are. View your digital member ID card, find health care providers, and look up your health benefits right on your phone.

## Glossary

**Benefits:** Health care items or services covered under your plan

**Cost sharing:** The amount you pay out of pocket for health care services

**Copayment:** What you pay for a covered health care service after you've paid your deductible

**Coinsurance:** The percentage of costs of a covered health care service you pay after you've paid your deductible

**Deductible:** The amount you pay for covered health care services before your insurance plan starts to pay

**In-network:** Providers and services that participate in our program and offer lower rates to members

**Out-of-network:** Providers and services that do not participate in our program. Their services may not be covered, or their services will be covered at a greater cost than in-network.

**Out-of-pocket maximum:** The most you have to pay for covered services in a plan year

### What's Next?

Learn more about all the benefits and services available to you at [www.amerihealthcaritasnext.com/fl](http://www.amerihealthcaritasnext.com/fl). You can refer to your Summary of Benefits and Coverage.

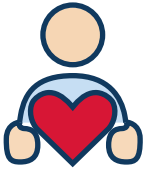
## Your benefits

With AmeriHealth Caritas Next, you get a full suite of benefits. These include:

### Core services



♥ A **primary care provider (PCP)** focused on your health, who can help in treating illnesses and injuries, writing prescriptions, and managing your overall wellness



♥ **Emergency services** in an emergency room, urgent care center, or ambulance (out-of-network when in-network is not available)



♥ **Hospitalization**, including surgery and overnight stays in the hospital

♥ Coverage for your **prescription drugs** and **pediatric care**

♥ **Prenatal** and **postnatal** visits are covered in full with no deductible on all plans, as well as **Bright Start**® maternity program for a healthy pregnancy.



♥ Round-the-clock **virtual care** visits with MDLive are covered at no cost to you.



♥ Visa® Reward cards for completing healthy activities through **Healthy Rewards**. For example, members can get a \$75 reward just for getting a physical exam within 120 days.

## Specialized services



♥ Treatment for both **mental health** and **substance use disorder** needs



♥ **Diabetes education** to teach you how to manage medication, blood sugar testing, diet, and exercise

♥ **Care Coordination** for members with short-term and/or emerging needs, including pharmacy support, durable medical equipment (DME), discharge and transitional planning needs, and help finding a doctor and scheduling visits



♥ **WW® (formerly Weight Watchers)** online memberships at no cost





## Important phone numbers

Keep these phone numbers close by so you can get in touch with AmeriHealth Caritas Next.

### Member Services

**1-833-999-3567 (TTY 711)**,  
Monday through Friday,  
8 a.m. to 6 p.m.

### Rapid Response and Outreach Team

**1-833-435-7708 (TTY 711)**,  
Monday through Friday,  
9 a.m. to 6 p.m.

Use for urgent health care  
coordination needs or  
access to services.

### Pharmacy Member Services

**1-833-981-7967 (TTY 711)**,  
Monday through Friday,  
8 a.m. to 6 p.m.

### MDLive

**1-877-771-6101**  
**(TTY 1-800-770-5531)**  
24 hours, seven days a week

MDLive is only for routine  
medical care.

**If this is an emergency, call 911.**

### 988 Suicide & Crisis Lifeline

**988**



A product of AmeriHealth Caritas Florida, Inc.

AmeriHealth Caritas Next offers individual and family health plans both on and off the Health Insurance Marketplace®. Please go to [www.amerihealthcaritasnext.com/fl](http://www.amerihealthcaritasnext.com/fl), where additional information can be found about our privacy practices, covered and noncovered services, provider availability, benefit/service restrictions, utilization and pharmaceutical management procedures, and your rights and responsibilities. We comply with applicable federal civil rights laws and do not discriminate on the basis of race, color, national origin, age, disability, sex, or any other basis prohibited by law. You may access the Notice of Nondiscrimination on our website above.